



“ADM’s Sustainability Goals – Making Measurable Progress on Energy Efficiency, Water Use and GHG Emissions”

May 14, 2024



Alison Taylor
Chief Sustainability Officer
ADM

Goals and Key Performance Indicators

Strive 35

KEY TOPIC	GOAL	PROGRESS	TARGET DATE	SDG ALIGNMENT
GHG Emissions	25% absolute reduction in Scope 1 + 2 GHG emissions over 2019 baseline by 2035	In progress: 14.7% reduction	12/31/2035	
	25% absolute reduction in Scope 3 GHG emissions over 2021 baseline by 2035	In progress: 7.7% reduction	12/31/2035	
Energy	15% reduction in energy intensity over 2019 baseline by 2035	In progress: 3.8% reduction	12/31/2035	
	25% renewable and low-carbon energy out of total energy use	In progress: 6.4% usage	12/31/2035	
Water	10% absolute reduction in water withdrawal over 2019 baseline by 2035	In progress: 4.2% reduction	12/31/2035	
Waste	90% diverted from landfill	In progress: 86.1% diverted	12/31/2035	

Biodiversity and Habitat Protection

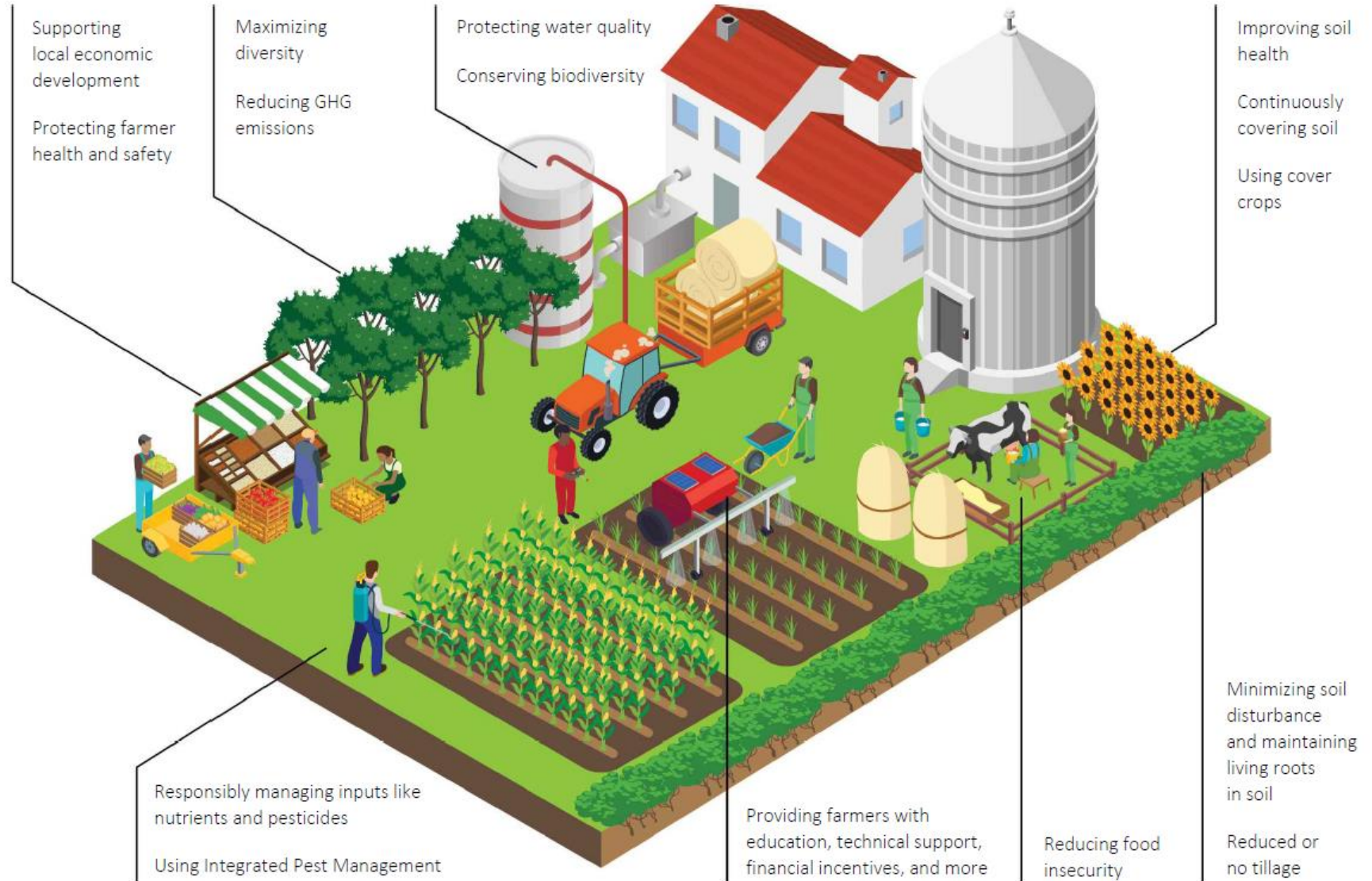
KEY TOPIC	GOAL	PROGRESS	TARGET DATE	SDG ALIGNMENT
No-Deforestation	100% deforestation-free across all supply chains	In progress: 75% verified	12/31/2025	
No-Conversion	100% conversion-free in defined high-risk areas, direct sourcing	NEW	12/31/2025	
	100% conversion-free in defined high-risk areas, indirect sourcing	NEW	12/31/2027	
Regenerative Agriculture	5,000,000 acres in regenerative agriculture programs globally	In progress: 2,800,000 acres	12/31/2025	

Enrich Lives

KEY TOPIC	GOAL	PROGRESS	TARGET DATE	SDG ALIGNMENT
Workplace Safety	50% reduction in Total Recordable Incident Rate (TRIR) from 2020 results	In progress: 9.5% reduction	12/31/2025	
	50% reduction in Lost Workday Incident Rate (LWIR) from 2020 results	In progress: 0% reduction	12/31/2025	

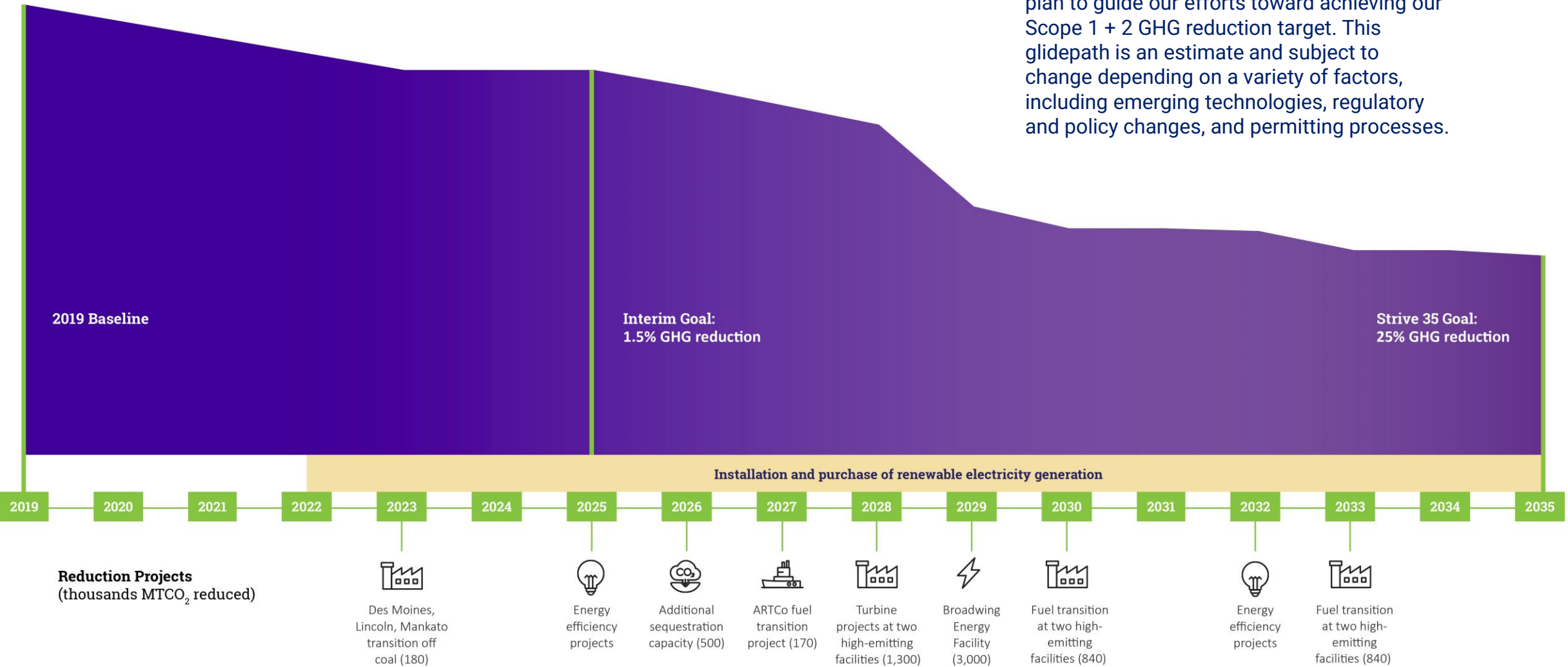
Enhancing Food Security

As a key component of the global food system, ADM has a critical role to play in safeguarding food security. As we strive to meet our purpose to unlock the power of nature to enrich the quality of life, we recognize the importance of working with growers across our vast supply chains. Resilient farms can support economic development while reducing environmental impacts and protecting our food supply to meet the needs of a growing global population.



Projected Scope 1 + 2 GHG Reduction Glidepath and Timeline

We have investigated a broad range of technologies and solutions and developed a plan to guide our efforts toward achieving our Scope 1 + 2 GHG reduction target. This glidepath is an estimate and subject to change depending on a variety of factors, including emerging technologies, regulatory and policy changes, and permitting processes.



Questions?